

BANK LOANS AVAILABLE FROM



and other leading Financial Institutions.

Blossom Greens

DELUXE APARTMENTS
Sector-63, Faridabad



**OC
Obtained***

**NO
HIDDEN
COST**

BOOK NOW

Booking amount : 2.0 Lacs

2 BHK-1100sq. ft.

Booking amount : 3.0 Lacs

3 BHK-1305sq. ft.



*Deluxe Appts.
with Modular Kitchen*



- EEC/FFC - NO CHARGE • CLUB -NO CHARGE
- IFMS- NO CHARGE • POWER BACKUP -NO CHARGE (2KVA)

Facility:-

- Children Play Area
- 24 Hours water Supply
- 24X7 Hour's security
- Green House
- Power Back-up
- 27x7 secured gated environment
- Eco-Friendly and Green Environment



PLAY AREA



ECO FRIENDLY



GPM DEVELOPERS PVT. LTD.

SITE PLAN



SITE DEVELOPMENT PLAN

1. CLUB & COMMERCIAL SHOPS
2. TOWER TYPE A - 3+1 BHK
3. TOWER TYPE B - 2 BHK
4. TOWER TYPE D - 2 BHK
5. TOWER TYPE C - 1 - 3 BHK
6. TOWER TYPE C - 2 - 3/4 BHK
7. TOWER TYPE E - EWS UNITS
8. ORGANISED GREEN AREA
9. RAAMP TO BASEMENT PARKING
10. SERVICES AREA



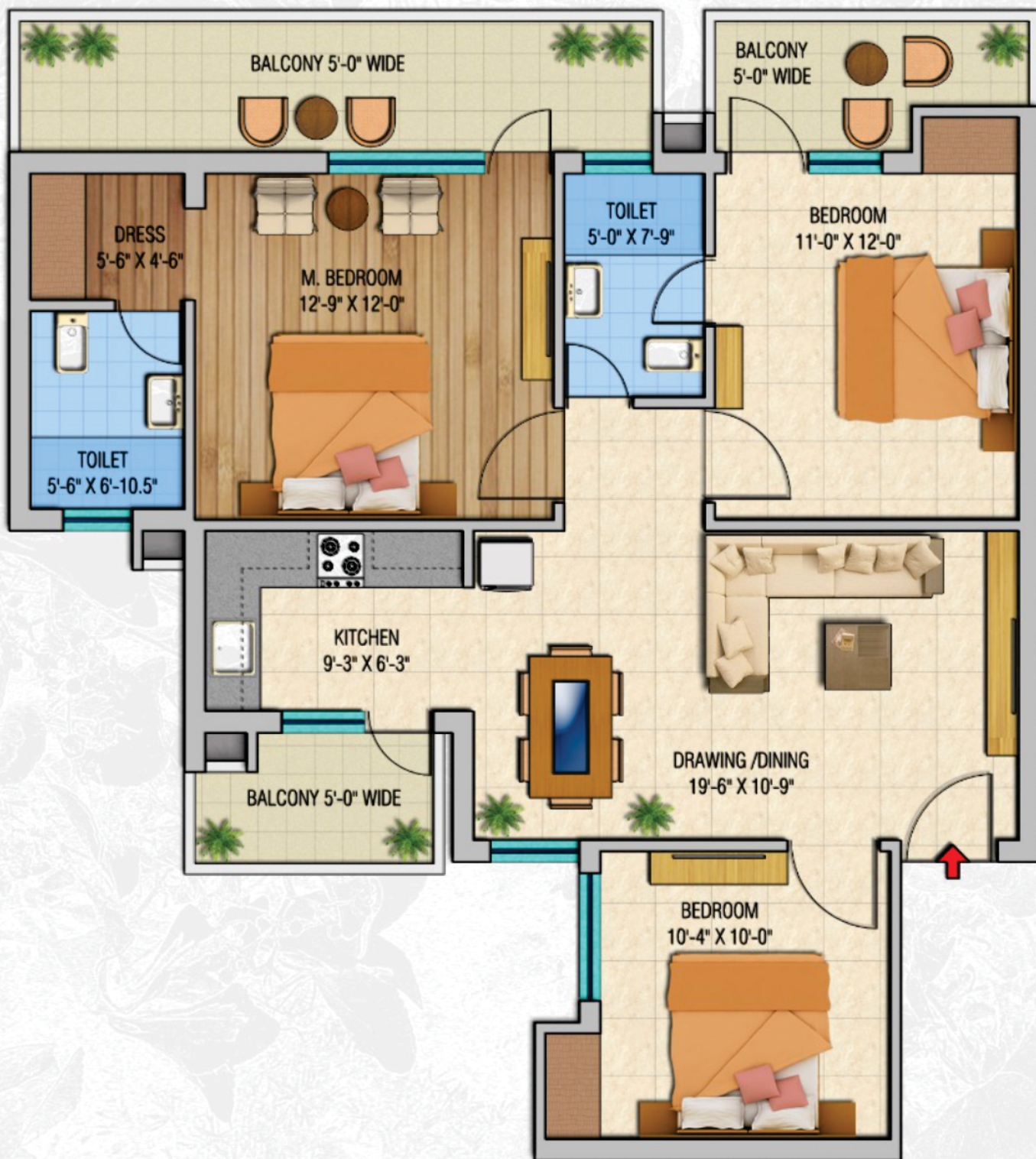
Blossom Greens

DELUXE APARTMENTS
Sector-63, Faridabad



2 BHK - Area 1100 sq. ft.



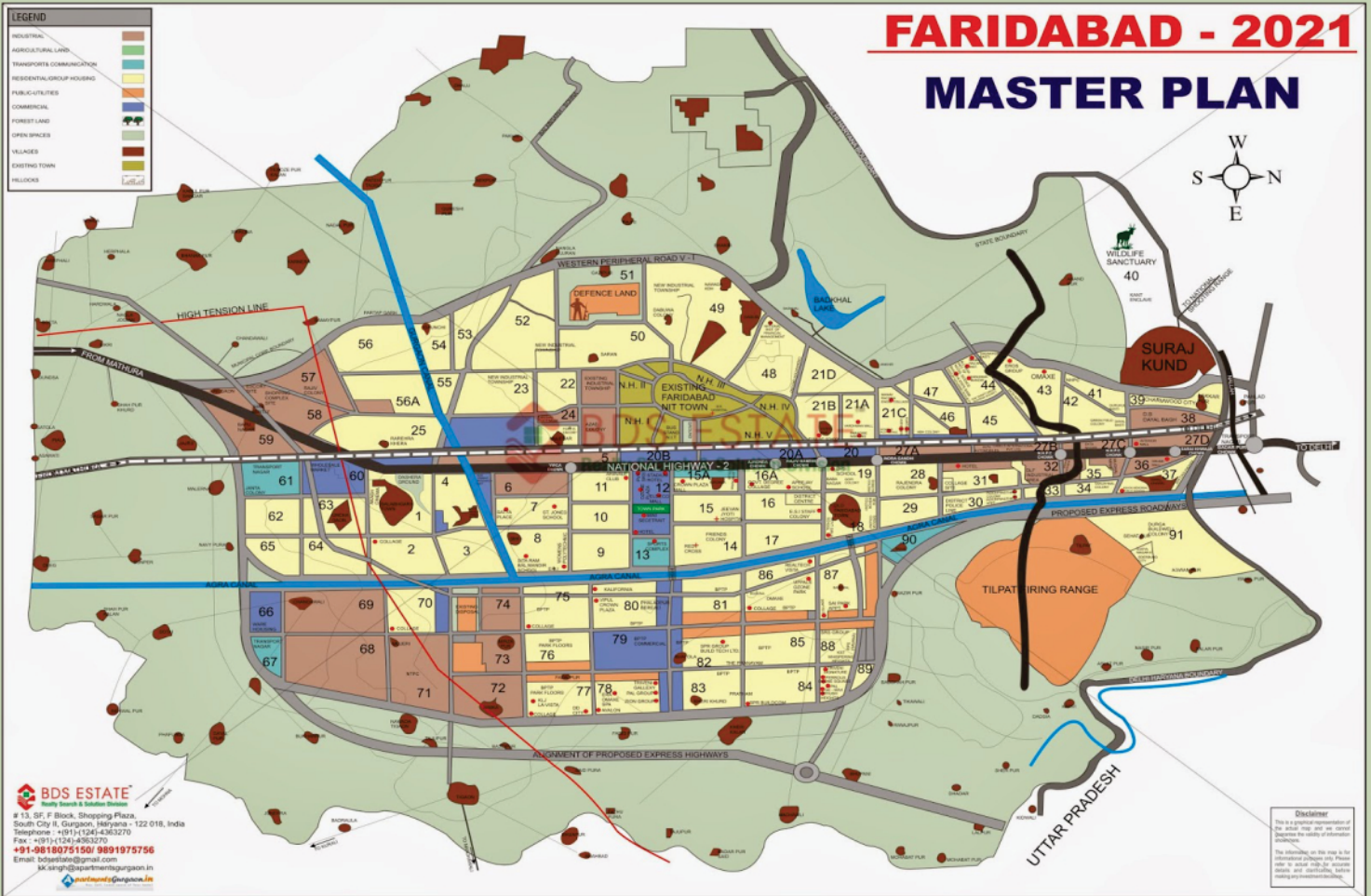


3 BHK - Area 1305 sq. ft.



FARIDABAD - 2021

MASTER PLAN



BDS ESTATE
 # 13, SF, F Block, Shopping Plaza,
 South City II, Gurgaon, Haryana - 122 018, India
 Telephone : +91(11)1341-4363270
 Fax : +91(11)1341-4363270
 +91-9819075150/ 985197556
 Email: bds@bds@gmail.com
 bk.singh@apartmentgurgaon.in
 www.apartmentgurgaon.in

Disclaimer
 This is a general representation of the actual map and its content. The drawings on this map is for information only. Please refer to the actual map and its content for all details. The drawings on this map is for information only. Please refer to the actual map and its content for all details.

ACTUAL PHOTOGRAPHS



Blossom Greens
 DELUXE APARTMENTS
 Sector-63, Faridabad

TENTATIVE SPECIFICATION

Wall Finishing	Living/ Dining - Painted in pleasing shades of Oil Bound Distemper Bed Rooms - Painted in pleasing shades of Oil Bound Distemper Stairs - Selected Marble/ Granite Cladding External Facade - Texture Paint Finish
Flooring	Living/ Dining - Porcelain Vitrified Tiles Bed Rooms - Laminated Wooden Flooring/ Vitrified Tiles Kitchen - Ceramic Tiles Toilet - Ceramic Tiles Balconies -Anti Skid Ceramic Tiles
Kitchen	Dado - Ceramic Tiles above working platform, rest Oil Bound Distemper Platform - Granite/ Marble Counter, with single bowl stainless steel sink with drain board
Toilets	Dado - Selected Ceramic Tiles Platform - Granite/ Marble Counter, white sanitary fixtures & contemporary styled CP Fittings
Doors	Seasoned hardwood frame with painted board shutters
Windows	Aluminum / UPVC / Wood
Electrical	Conduit Copper electrical wiring for all light and power points
Stair/ Passage	Marble/ Kota Stone Flooring
External Areas	Green Area - Organised green landscaped areas, Kids park, Jogging and walking track, Sitting area, Adequate street lighting & open are lighting, Sufficient car parking facilities
Shopping	Convenient shopping centre within campus for daily needs.

Note: Architects and the Developer reserve right to alter the specifications and facilities.

विशेषताएं :

- ★ दिल्ली मुम्बई कॉरिडोर व एफएनजी एक्सप्रेसवे के नजदीक
- ★ सबसे कम मूल्य पर सबसे अच्छा आवास
- ★ प्रत्येक फ्लोर पर प्राकृतिक रोशनी एवं हवा
- ★ आपके बजट के अनुरूप उत्तम आवास
- ★ पूर्ण सुरक्षित एवं प्रदूषण रहित वातावरण
- ★ कैम्पस के अंदर रोजमर्रा वस्तुओं की उपलब्धता
- ★ प्रत्येक टावर में हाई स्पीड लिफ्ट
- ★ सेक्टर रोड्स से कनेक्टेड प्रोजेक्ट
- ★ एनएच 2 से 3-5 मिनट की दूरी पर
- ★ पीएनजी गैस पाइप लाइन उपलब्ध



Corporate Off.: SCF-2, Ashoka Enclave Part-1, Sector-35, Faridabad, Haryana-121003
Phone: 0129-4085411, 9212376666, 9873663779, 7011415014
E-mail : info@gpmdeveloper.com, contact@gpmdeveloper.com
Website: www.gpmdeveloper.com

Image shown in the advertisement may vary from actual. "Terms & Condition Apply

DTCP Haryana has granted Mis GP M developers pvt ltd license no.86 of 2009 and 139 of 2014 for development of group housing colony over 4.5125 acres of land, the total no. of flats approved are 300 and 53 EWS & building plan is approved vide memo No. 23235 dt. 27.11.15. RERA NO. 310 of 2017 has been granted to GPM Developers Pvt. Ltd. Note :-Approval can be checked in the colonizer office . site plan and unit plans are subjects to minor changes during course of construction based on the working drawing for which regularization shall be obtained the Developer.